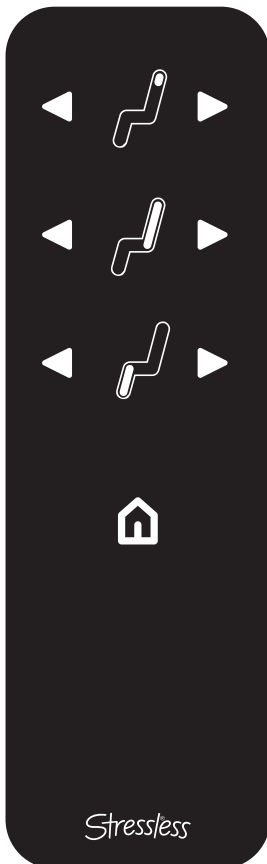
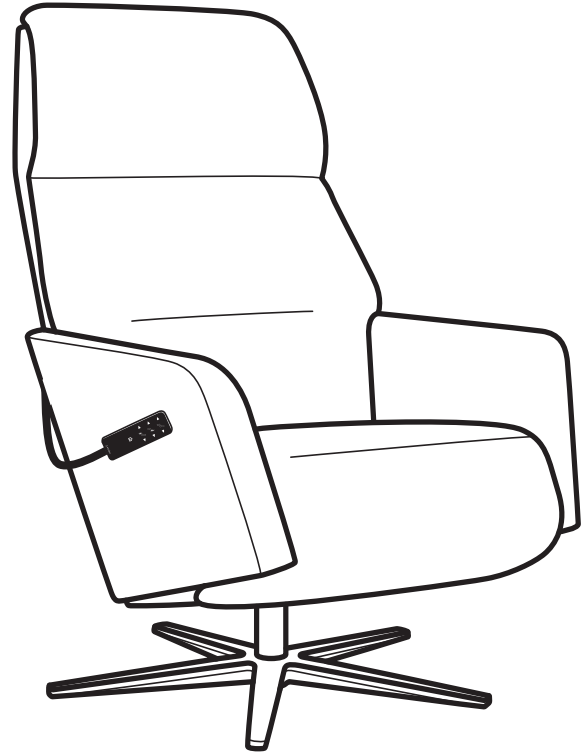
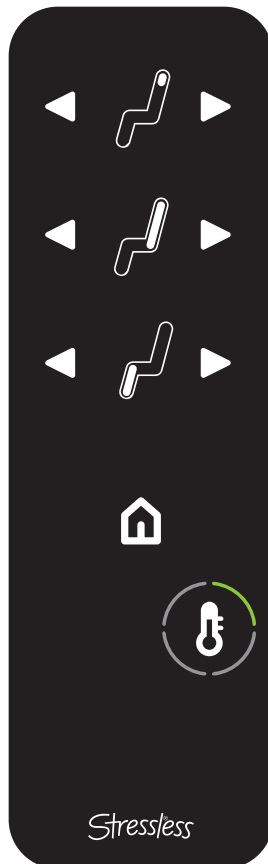


Assembly and use

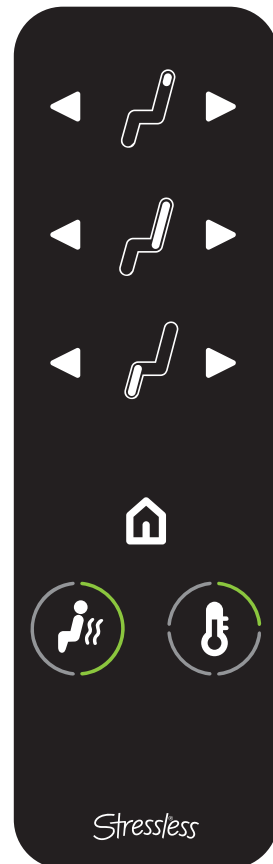
Stressless® Sam & Scott



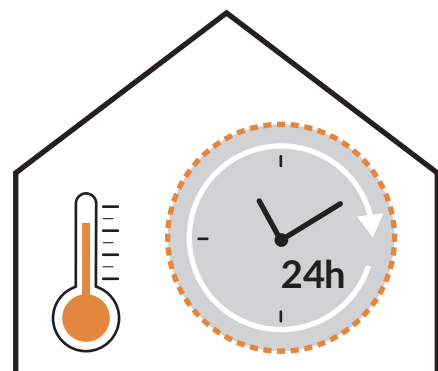
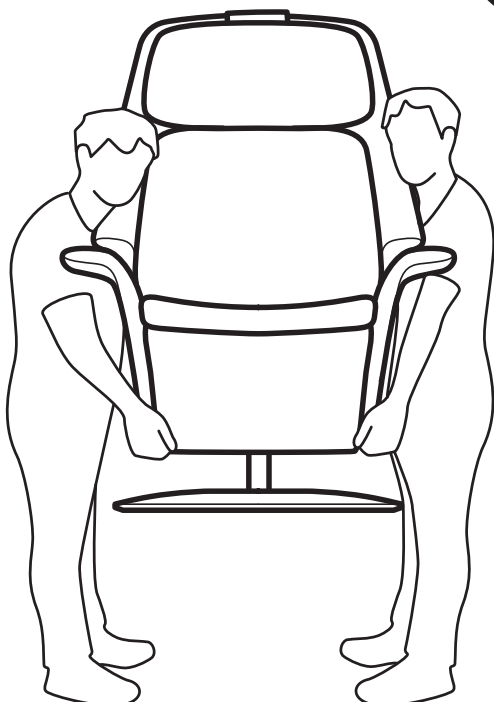
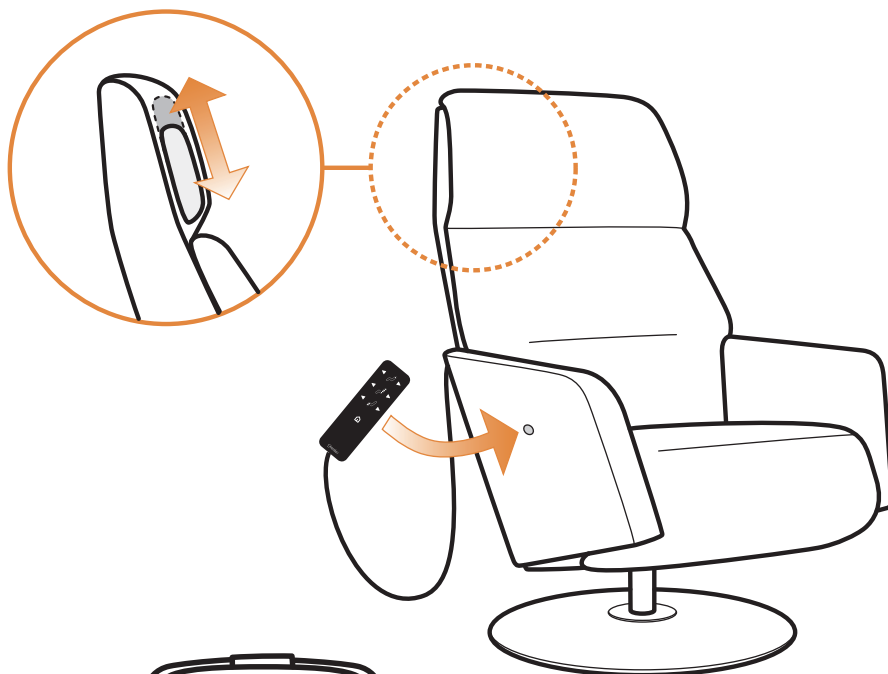
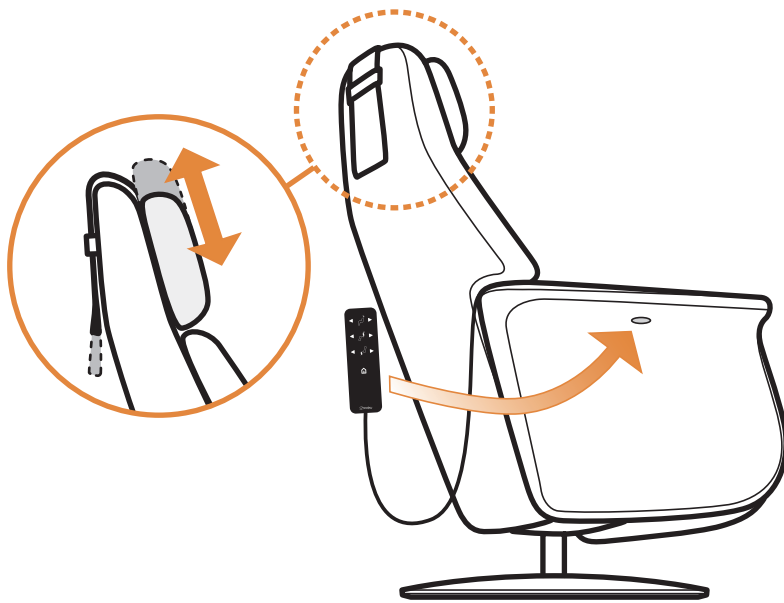
Power



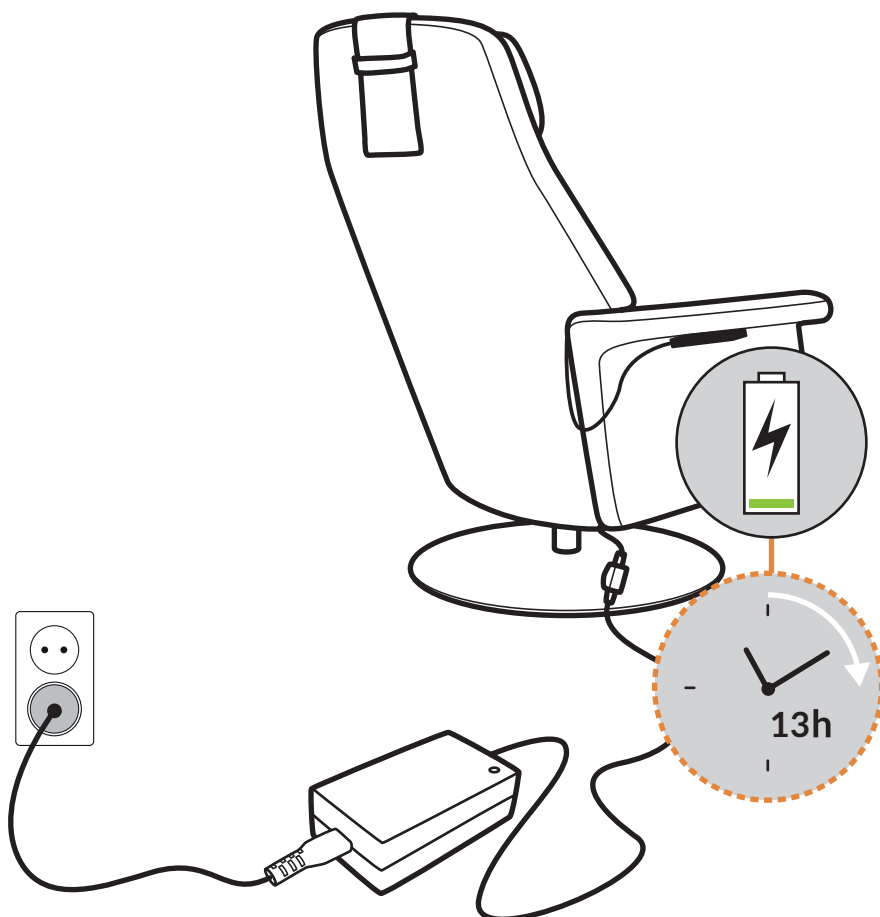
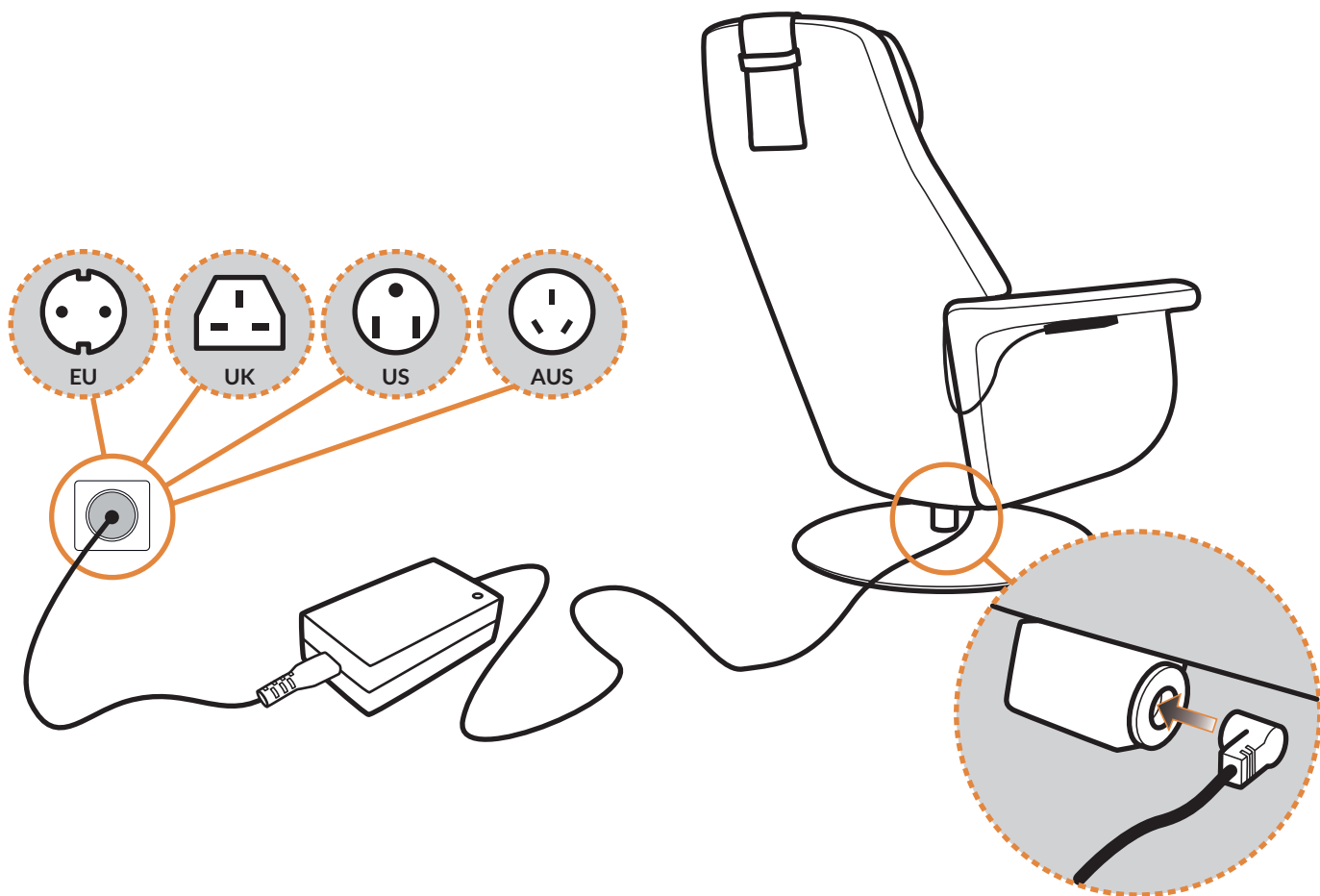
Power with heating

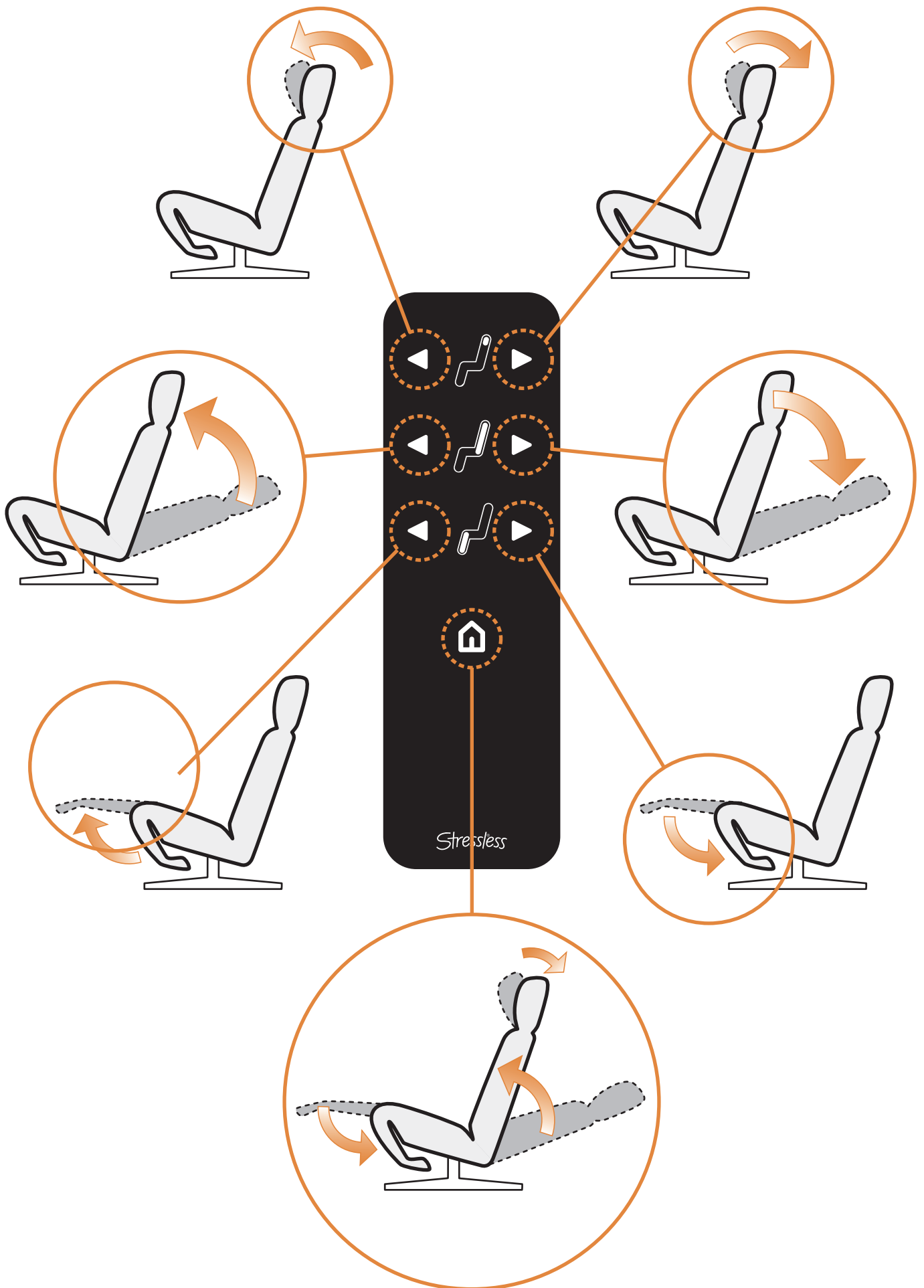


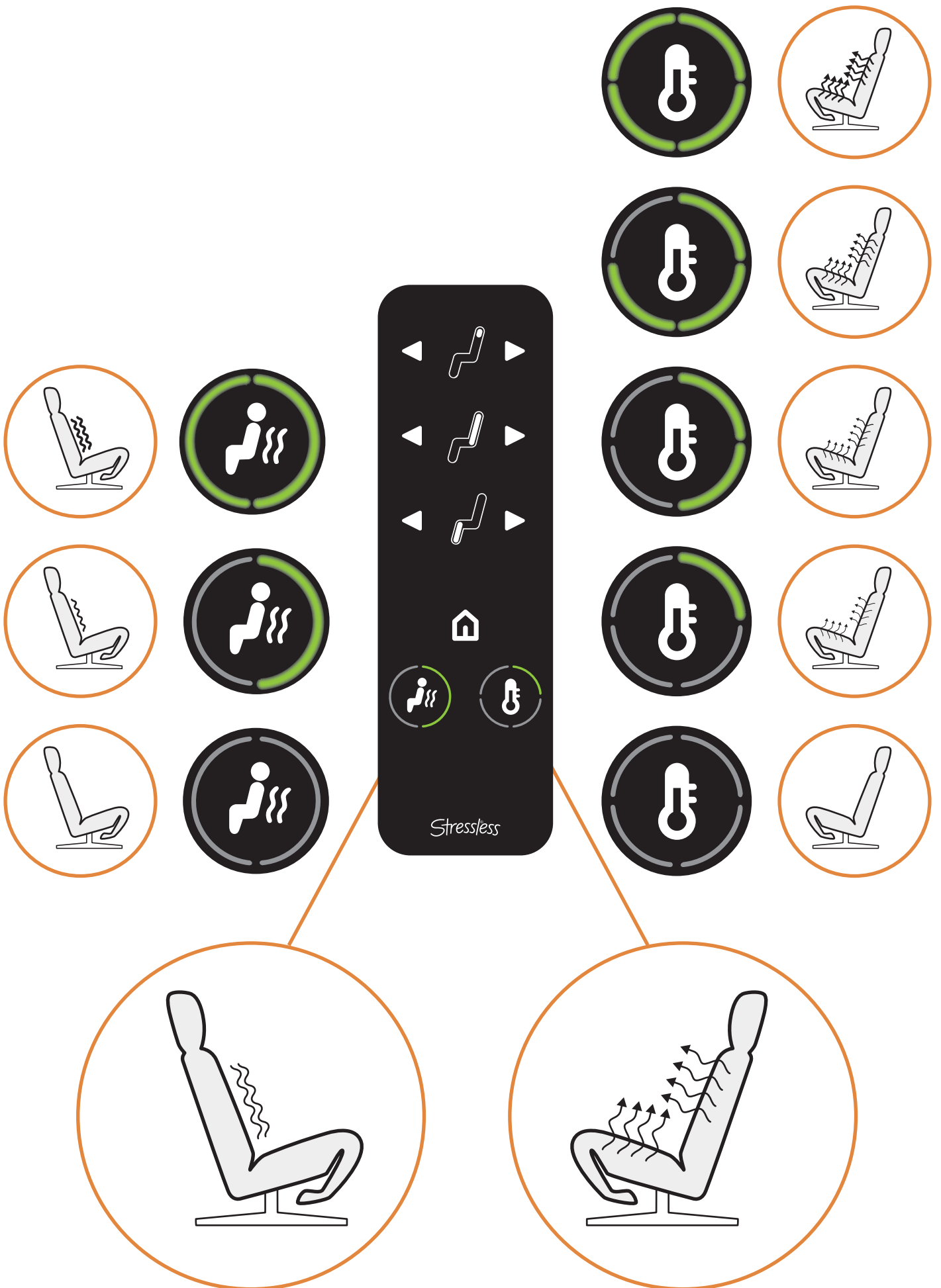
Power premium

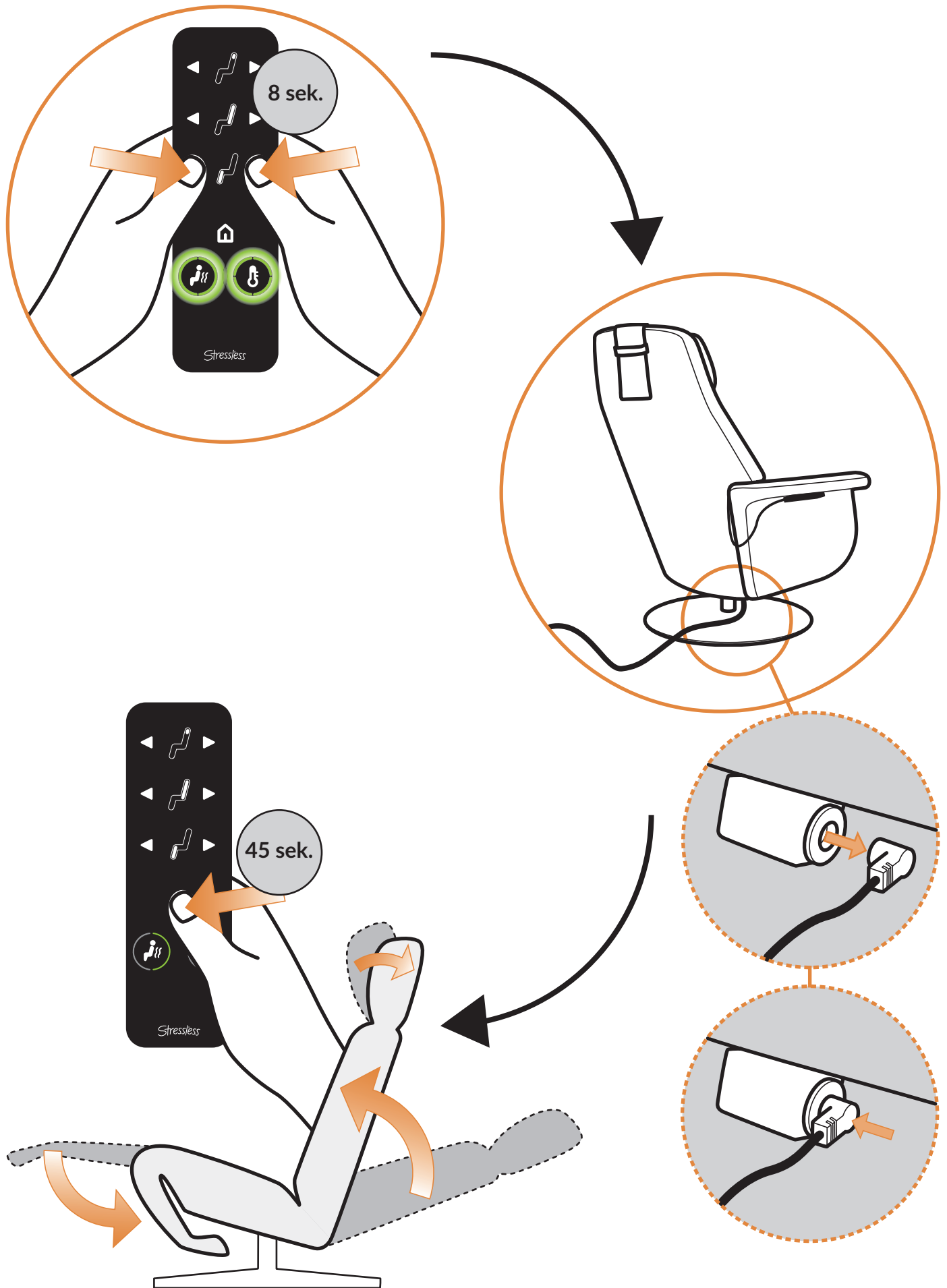


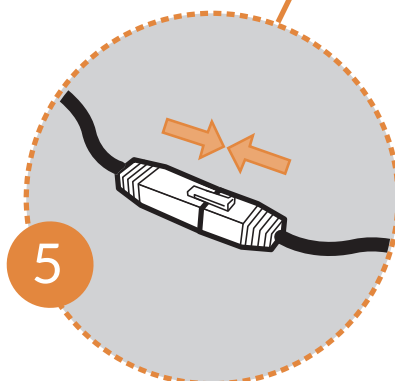
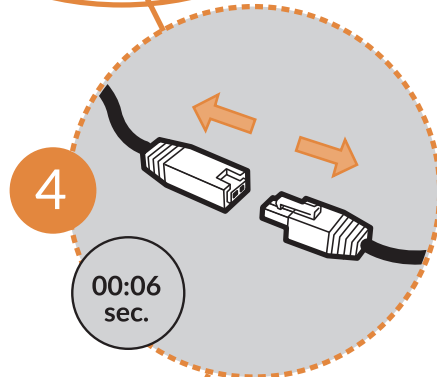
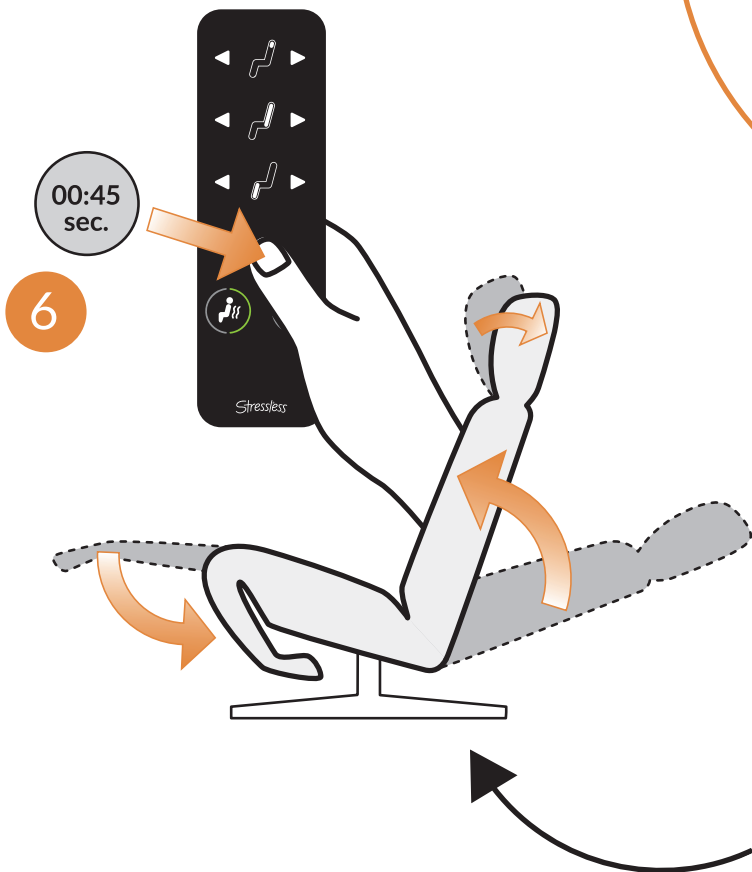
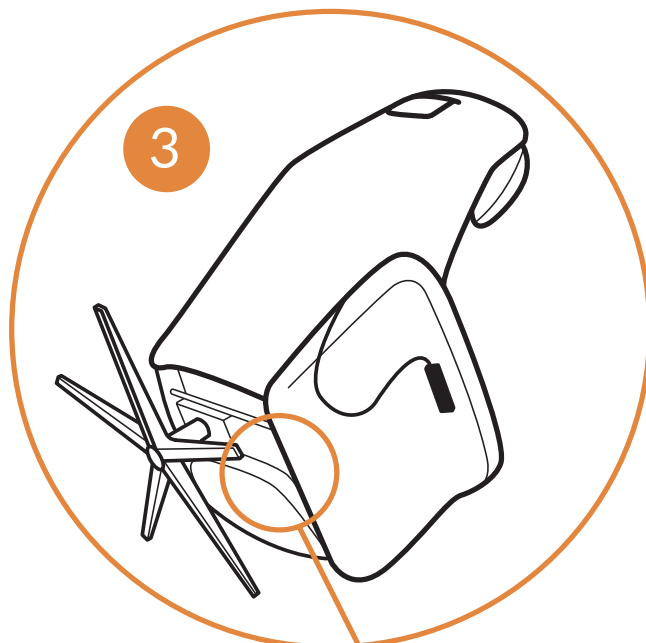
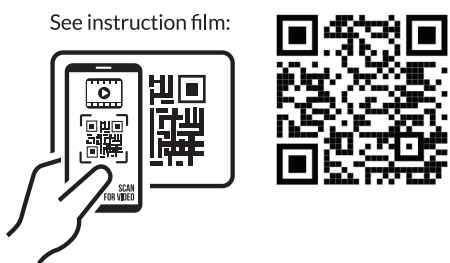
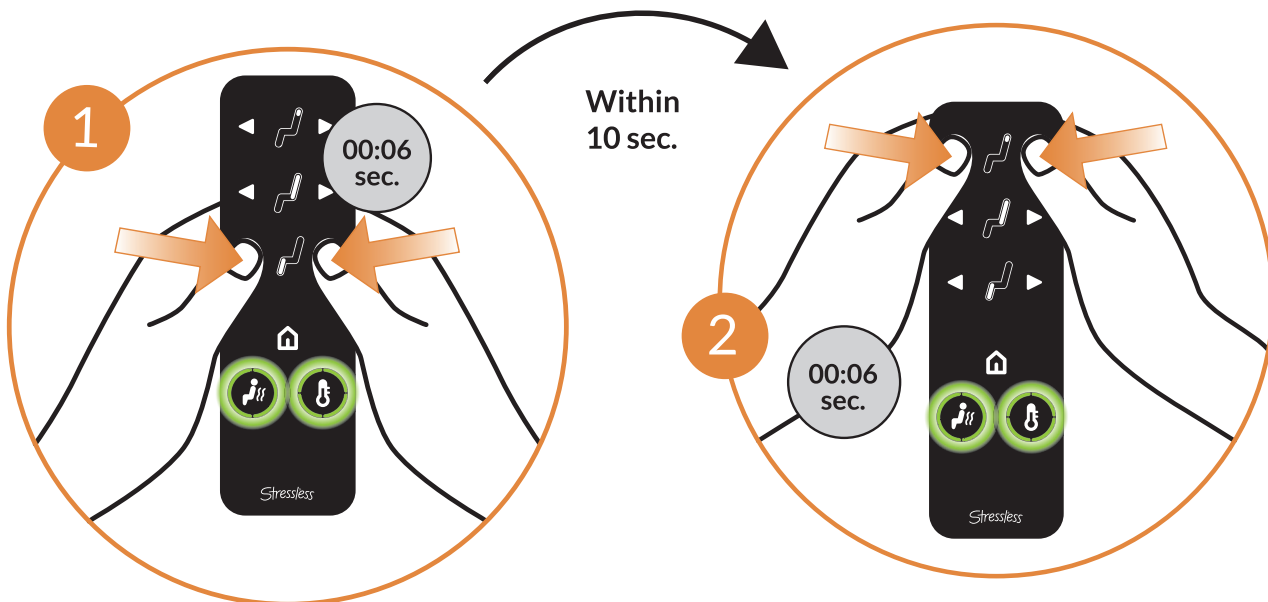
Acclimates indoors for 24 hours before use!







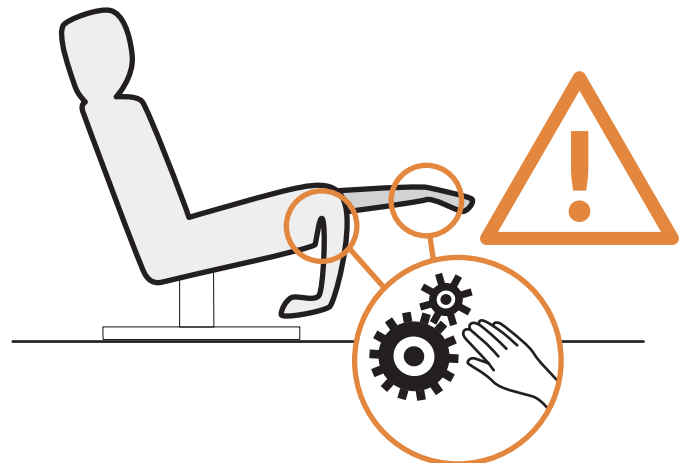
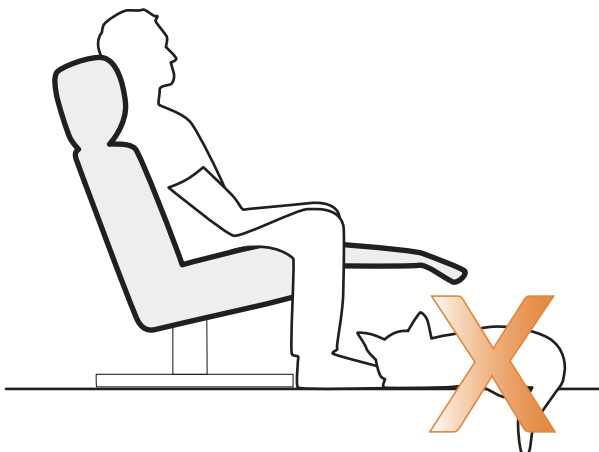
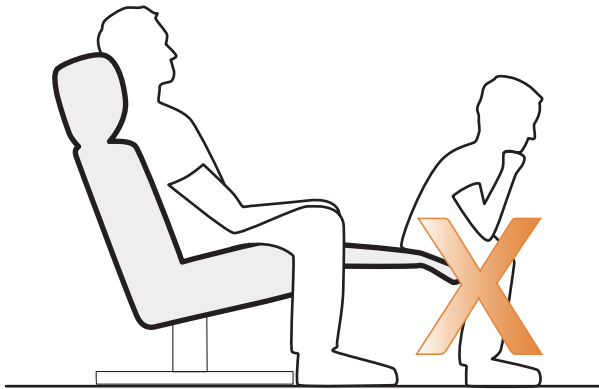
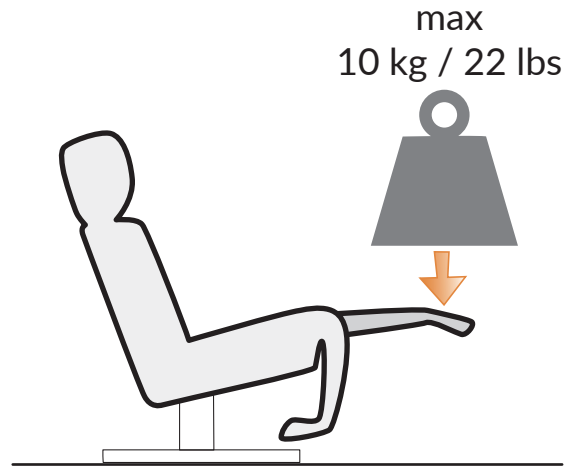
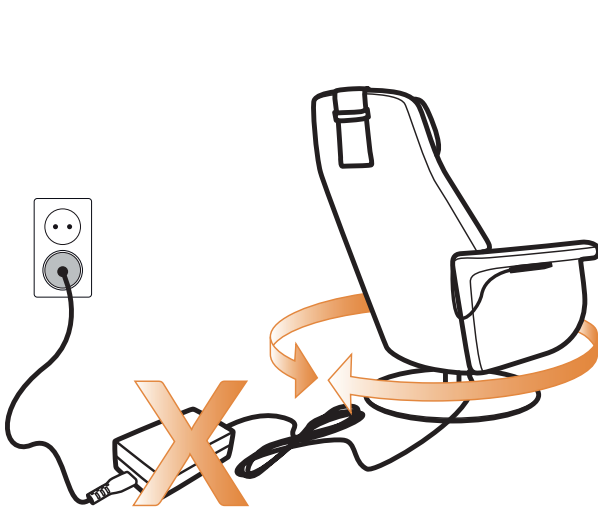






Magnets could affect the functioning of pacemakers and implanted heart defibrillators.

- A pacemaker could switch into test mode and cause illness.
- A heart defibrillator may stop working.



Stressless® Sam & Scott - User Guide Massage Function

The Stressless® massage function is using an air compressor to inflate 5 individual air chambers, simulating a wave pattern.

To empty the chambers after use, sit in the chair until the massage button on the control panel stops flashing.

If not deflated, the air will be locked in the air chambers, and the back cushion will not have the same comfort when you next use the chair.

Alternatively, start the massage function again when next using the chair and follow the steps above.



WWW.STRESSLESS.COM/MYSTRESSLESS



Ekornes AS
Tel.: (+47) 70 25 52 00
E-mail: office.no@ekornes.com

990005144